

# Florida Health Information Exchange Outreach May 29, 2015

---



**Florida Health Information Exchange  
Coordinating Committee**



# 2015 Health Information Exchange Outreach Update

## Outreach Activities in 2015:

- Events, tours, webinars, and conference calls
- Increasing use of social media
- Symposium planning and event
  - **June 26, 2015 in Tallahassee**
- Outreach materials developed & updated



# Health IT Symposium

## Going Digital: Helping Florida Get Connected

June 26, 2015

7:30 a.m. – 12:15 p.m.

Augustus B. Turnbull Center in Tallahassee  
registration information available at

[www.florida-hie.net](http://www.florida-hie.net)

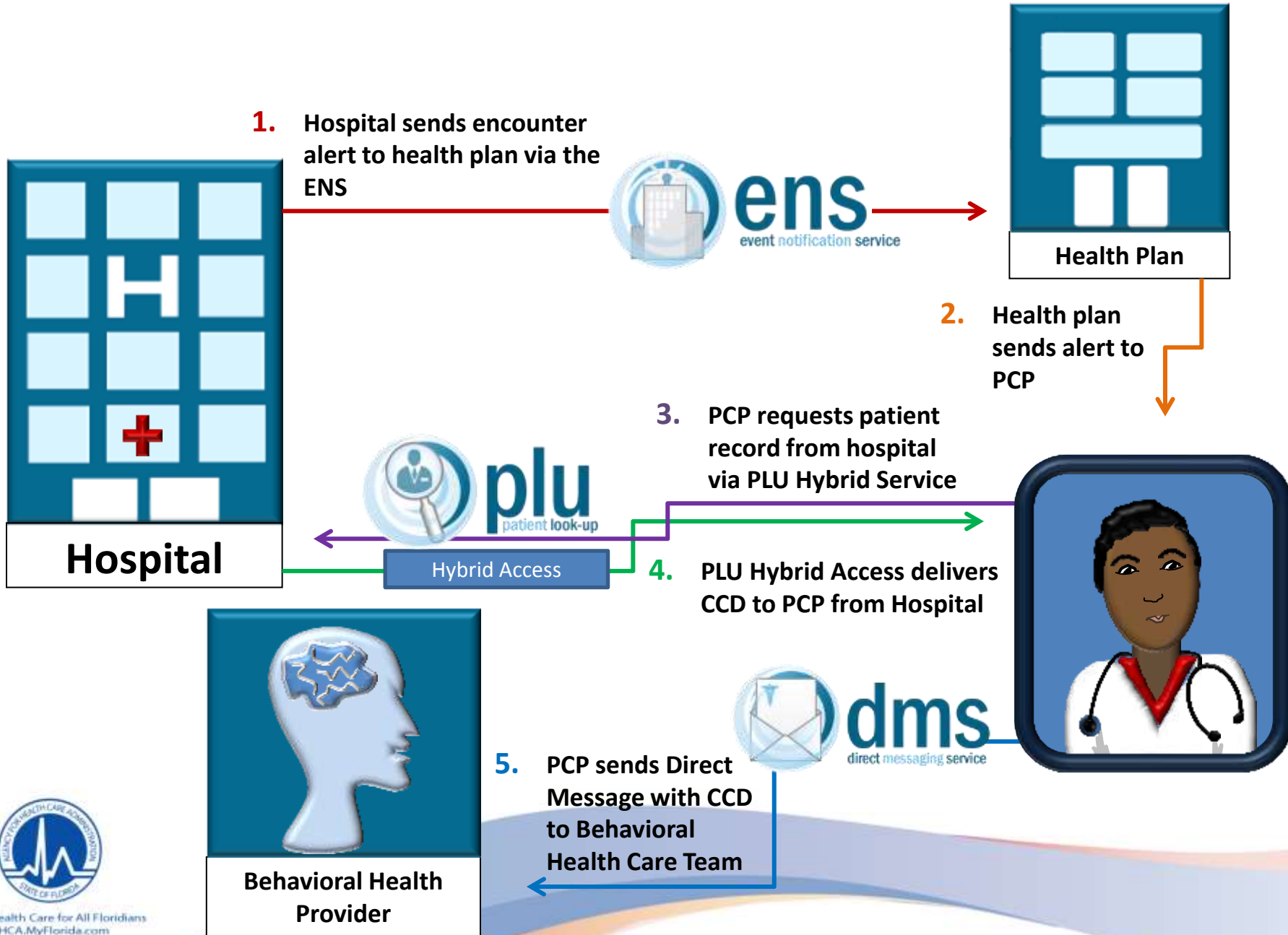


# Illustrated Use Cases

- Hospitals, Physicians, Long Term Post Acute Care
- Complementary Florida HIE Services Illustrated
- Examples
  - Patient receiving behavioral health treatment seen in Emergency Department
  - Physician obtaining treatment records following out-of-town auto accident
  - Skilled nursing facility updating hospital treatment records for the treatment team



# Florida HIE Enabling Transition of Care using Alerting Services



# Florida HIE Enabling Transition of Care using Hybrid Access



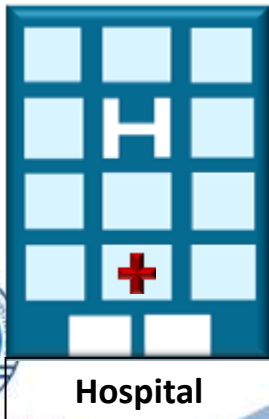
1. PCP requests patient record regarding treatment for auto accident injuries at hospital in another city via PLU Hybrid Access



Hybrid Access



3. PCP sends Direct message with CCD to patient's comprehensive outpatient rehabilitation facility



2. The CCD is delivered by PLU Hybrid Access from Hospital to PCP



Hybrid Access



# Florida HIE Enabling Transition of Care using Hybrid Access



1. SNF requests hospital records via the PLU Hybrid service. Hybrid access service performs PLU for patient records



3. SNF sends Direct Message containing treatment plan to patient's care team



2. The Continuity of Care Document (CCD) is delivered by PLU Hybrid service to SNF



# Florida HIE Outreach Plan



Any Questions?

