

**Florida Health Information Exchange (HIE)**

**Quarterly Plan Report**

**Contract No. EXD027**

**May 29, 2015**

**(Ref. EXD027 Attach. I, Pg. 21 Reporting)**



# **Florida HIE Quarterly Planning Report**

## **1. Summary of Quarterly Activities**

The following activities have been completed during the sixteenth quarter of execution of the Florida Health Information Exchange (Florida HIE) program. This covers the period from February 1, 2015 through April 30, 2015.

For the Event Notification Service (ENS) the development team held connectivity sessions to connect hospital data sources for admit, discharge, and transfer (ADT) feeds to the Florida HIE ENS. By the end of March 100% of the hospitals (206) connected to ENS in production. During the quarter Molina Healthcare and Integral Quality Care subscribed to receive ENS alerts joining WellCare Health Plans, Sunshine State Health Plan. In addition WellCare Health Plans, Sunshine State Health Plan, and Integral Quality Care started receiving notifications through ENS. There were 21,618 health plan notifications through ENS in April 2015.

Patient Look-Up (PLU) Service production nodes include Strategic Health Intelligence, Atlantic Coast HIE, Florida Hospital/Adventist Health System, UF Health, Broward Health, Martin Health System, Bethesda Health, and Senior Home Care – (an affiliate of Kindred at Home), and Orlando Health. PLU produced 2,258 successful transactions during the month of April. The PLU deployment team continued onboarding progress with the Department of Health (DOH), Tampa Bay Regional Health Information Organization (RHIO), and Community Health IT. The team participated in the PLU User Group meetings in February and April and facilitated the Technical User Group meeting in March.

## **2. Adoption and Utilization Statistics**

### **a) PLU Deployments**

- Production Deployments
  - Strategic Health Intelligence (SHI)
    - Assisted with SHI's hybrid service testing
  - Atlantic Coast HIE (ACH)
    - Renewed DigiCert certificate in production Express Lite
    - Completed validation tasks for new vendor transition
  - Florida Hospital
    - Contacted node about the high volume of queries; an internal process triggers a patient discovery request during patient registrations
    - Added DeferredCreation document status to document query (QD)
    - Updated code to provide BirthTime in CCD
    - Coordinated resending large ALTM file after error transferring to FairWarning
    - Investigated leap second coordinated universal time (UTC) addition

- UF Health
  - Started investigating patient authorization
  - Renewed Digicert certificate in production Express Lite
  - Discussed Florida HIE consent policy
  - Researched privacy manager report with test user credentials
  - Received authorization to update internal consent model
- Broward Health
  - Resolved issue that caused gap in metric collection and that caused queries to be blocked
  - Corrected special characters in ORU (Observational Report – Unsolicited) that caused CCD issues
  - Investigated additional CCD data for the group of anesthesiologist using the SHI hybrid service
- Martin Health
  - Discussed consent and matching policy
- Bethesda Health
  - Successfully changed source Internet Protocol (IP) address
  - Resolved issue with matching successful queries – Mobile MD certificate issue
  - Renewed Digicert certificate in production Express Lite
- Senior Home Care
  - No requests for support this period
- Orlando Health
  - Assisted with request for locating large documents that are stored in the Express Lite's database
  - Reset privacy manager password
  - Researched displaying documents in HTML instead of PDF
- Deployments near completion
  - Community Health Systems (CMS) formerly known as Health Management Associates (HMA)
    - Received node name for CHS facilities: CHSPSC Florida Affiliates (Community Health Systems Professional Services Corporation)
    - Waiting for confirmation from node to go live

Community Health Systems (formerly HMA) Deployment Status (Express Lite)



- Deployments in work
  - Department of Health (DOH)
    - Facilitated weekly meetings
    - Continue to manage all open tickets with Mirth
    - Started discussing plan to complete clinical data repository (CDR) implementation
    - Started end-to-end Self Test
    - Facilitated infrastructure questions from DOH to Mirth
    - Continue to look at public health use cases
    - Prepared for and continued effort to retest split architecture
    - Provided two appliance updates
  - Florida Accountable Care Services (ACO)
    - No requests for support this period
  - Tampa Bay Regional Health Information Organization (RHIO)
    - Facilitated weekly meetings
    - Completed pre-validation and validation testing
    - Captured and completed validation analysis of test results and shared with node
  - Community Health IT (Relay Health)
    - Supported status meeting
    - Assisted with Aurion configuration
    - Completed end-to-end self test
    - Completed cross-gateway test
    - Completed audit log transfer manager (ALTM), performance audit transfer manager (PATM), passthrough
    - Presented Validation webinar
    - Began smoke test from Harris reference test system (RTS3) to RelayHealth software
    - Built Express Lite and configuring passthrough
    - Researching options for hosting Express Lite

DOH Deployment Status (Express)



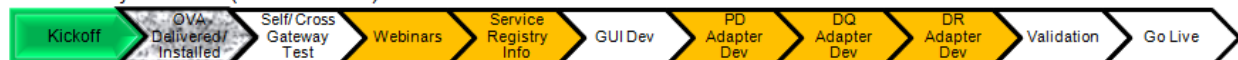
Florida Accountable Care Services Deployment Status (Express Lite)



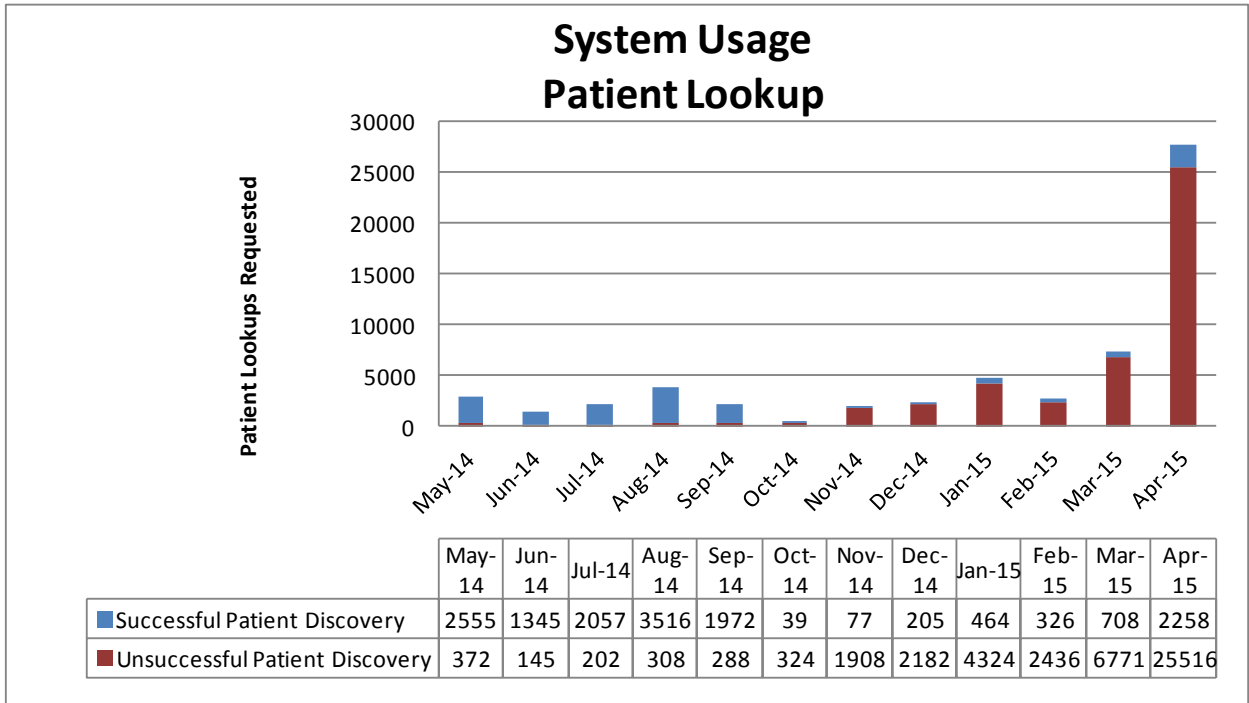
Tampa Bay RHIO Deployment Status (Site Services)



Community Health IT (Site Services)



**b) PLU Transactions**

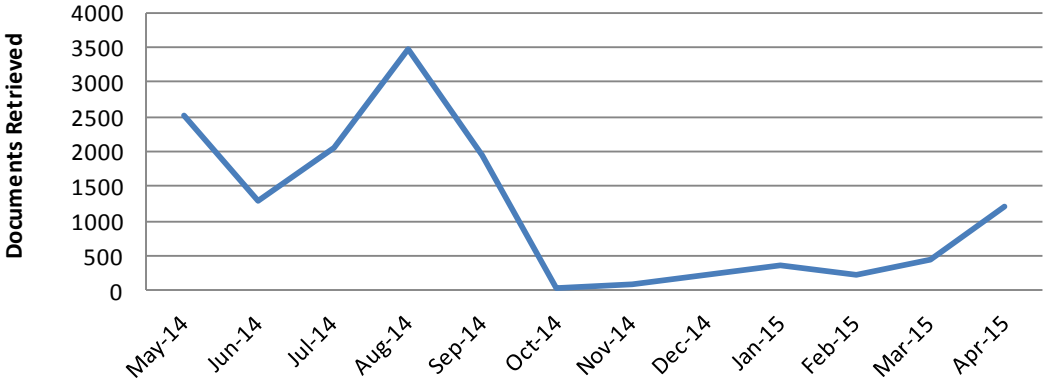


Note: Florida Hospital turned on a data availability service during which sends a broadcasted queries to all Florida HIE production nodes during patient registration.

**April 2015 Node Inbound Transactions**

Node	Successful	Unsuccessful	Total Inbound Patient Discovery
SHI	10	3455	3465
ACH	25	3440	3465
Florida Hospital	12	7	19
UF Health	14	3457	3471
Broward Health	21	3456	3477
Martin Health System	4	3463	3467
Bethesda Health	7	3463	3470
Senior Home Care	74	3392	3466
Orlando Health	2091	1383	3474
Totals	2258	25516	27774

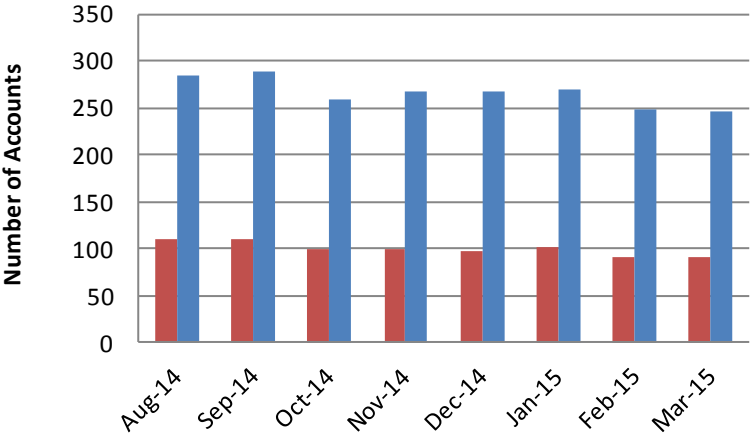
### Transactions Processed Patient Lookup



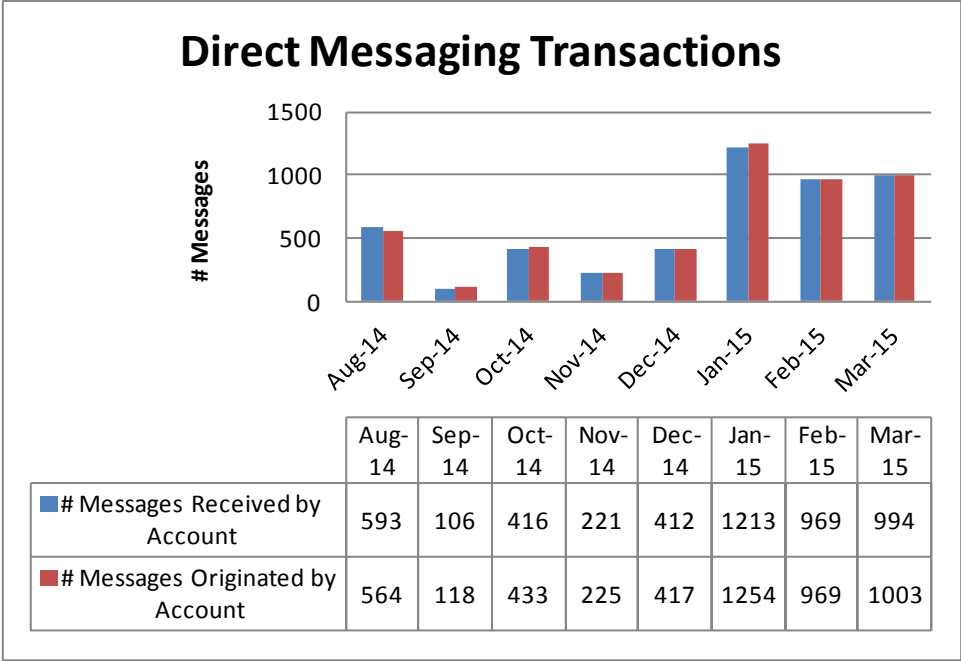
	May-14	Jun-14	Jul-14	Aug-14	Sep-14	Oct-14	Nov-14	Dec-14	Jan-15	Feb-15	Mar-15	Apr-15
— Documents Retrieved	2522	1281	2045	3479	1950	27	77	212	368	217	437	1222

**c) Direct Messaging Registrants and Transactions**

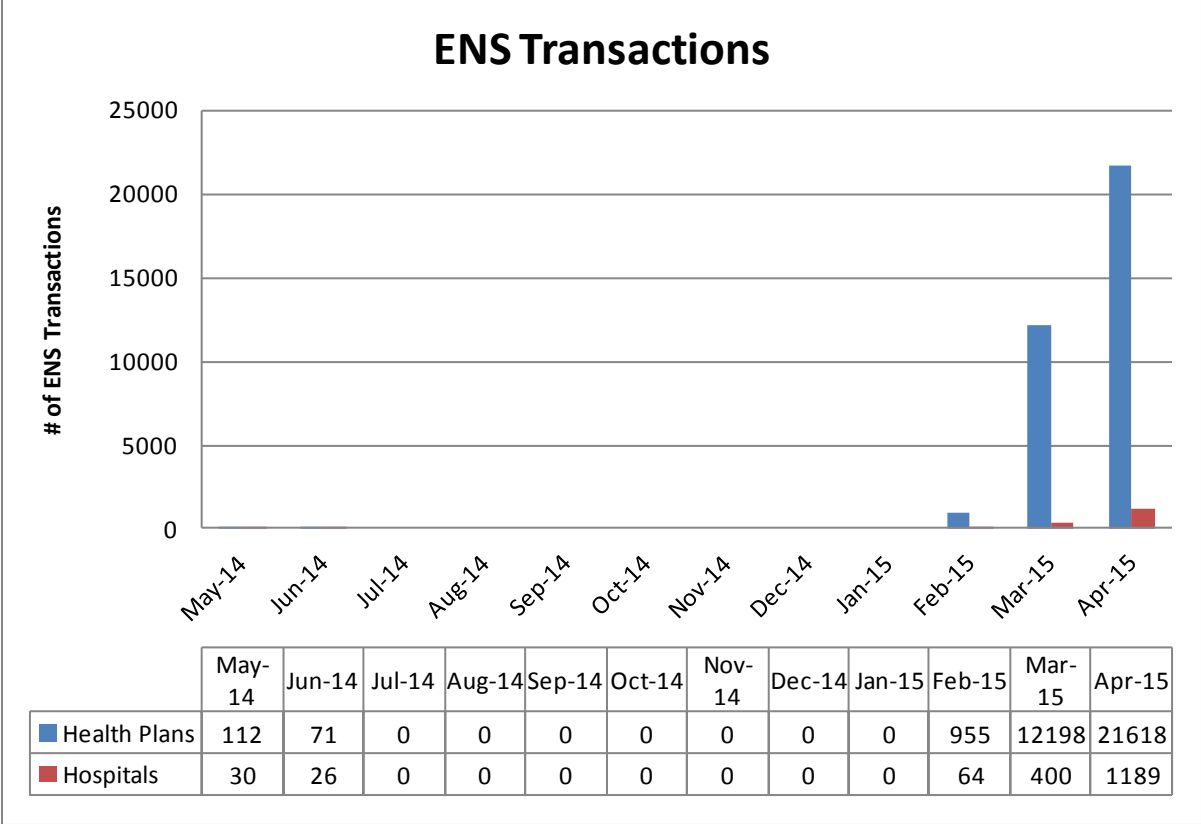
### Direct Messaging Registrants



	Aug-14	Sep-14	Oct-14	Nov-14	Dec-14	Jan-15	Feb-15	Mar-15
■ Direct Messaging Accounts	109	110	100	99	98	101	91	91
■ Direct Messaging Users	284	289	258	267	268	269	248	247



**d) ENS Transactions**



- 4 Health Plans enrolled
  - WellCare Health Plans
  - Sunshine State Health Plan
  - Molina Healthcare of Florida
  - Integral Quality Care
- 206 Hospitals enrolled
  - 100% connected to ENS in production

ENS Data Source status as of April 30, 2015

<b>Data Sources *</b>	<b># of Hospitals</b>	<b>Status</b>
Adventist Health System	15	Production
All Children's Health System	1	Production
Ann Bates Leach Eye Hospital	1	Production
Baker County Ed Fraser	1	Production
Baptist Health Care	4	Production
Baptist Health South Florida	3	Production
Baptist Health System	4	Production
Bartow Regional Medical Center (CHS)	1	Production
Bayfront Health Brooksville Springhill (CHS)	2	Production
Bayfront Health St. Petersburg (CHS)	1	Production
Bay Care Health System	12	Production
Bay Medical Center	1	Production
Bert Fish Medical Center	1	Production
Bethesda Health	2	Production
Boca Raton Regional Hospital	1	Production
Broward Health	4	Production
Calhoun Liberty Hospital	1	Production
Cambellton-Graceville	1	Production
Central Florida Health Alliance	3	Production
Charlotte Regional Medical Center (CHS)	1	Production
Citrus Memorial Health System	1	Production
Desoto Memorial Hospital	1	Production
Doctors Bonifay	1	Production
Doctors Memorial Hospital (Perry)	1	Production
Flagler Hospital	1	Production
Florida Hospital	7	Production
Halifax Hospital Medical Center	1	Production
HCA	44	Production
Healthcare District of Palm Beach County	1	Production
Health Central Hospital	1	Production
Health First	4	Production
Healthmark Regional Medical Center	1	Production



<b>Data Sources *</b>	<b># of Hospitals</b>	<b>Status</b>
Hendry Regional Medical Center	1	Production
Heart of Florida (CHS)	1	Production
Highlands Regional Medical Center (CHS)	1	Production
H. Lee Moffitt Cancer Center	1	Production
Indian River Memorial Hospital	1	Production
Jackson County Hospital District	1	Production
Jackson Health System	3	Production
Jupiter Medical Center	1	Production
Lake Butler Hospital	1	Production
Lakeland Regional Medical Center	1	Production
Lake Wales Medical Center (CHS)	1	Production
Larkin Community Hospital	1	Production
Lee Memorial Health System	4	Production
Lehigh Regional Medical Center (CHS)	1	Production
Lower Keys Medical Center (CHS)	2	Production
Madison County Hospital	1	Production
Manatee Healthcare System	2	Production
Martin Health	3	Production
Memorial Healthcare System	5	Production
Miami Children's Hospital	1	Production
Mt. Sinai Medical Center	1	Production
Munroe Regional Medical Center	1	Production
Naples Community Hospital	2	Production
Northwest Florida Community Hospital	1	Production
Orlando Health System	5	Production
Parrish Medical Center	1	Production
Pasco Regional Medical Center (CHS)	1	Production
Peace River Regional Medical Center (CHS)	1	Production
Physicians Regional Medical Center (CHS)	2	Production
Putnam Community	1	Production
Regional General Hospital Williston	1	Production
Sacred Heart Health System	3	Production
Santa Rosa Medical Center (CHS)	1	Production
Sarasota Memorial Hospital	1	Production
Shands Lake Shore (CHS)	1	Production
Shands Live Oak (CHS)	1	Production
Shands Stark Regional Medical Center (CHS)	1	Production
St. Cloud Regional Medical Center (CHS)	1	Production
St. Vincents Health System	3	Production
Tallahassee Memorial Healthcare	1	Production
Tampa General Hospital	1	Production
Tenet Florida	10	Production

