

**Florida Health Information Exchange (HIE)**

**Quarterly Plan Report**

**Contract No. EXD027**

**August 21, 2015**

**(Ref. EXD027 Attach. I, Pg. 21 Reporting)**



# **Florida HIE Quarterly Planning Report**

## **1. Summary of Quarterly Activities**

The following activities have been completed during the seventeenth quarter of execution of the Florida Health Information Exchange (Florida HIE) program. This covers the period from May 1, 2015 through July 31, 2015.

The development team continued to support the Event Notification Service (ENS) which provides health plans and accountable care organizations (ACOs) with timely notifications about their member's hospital encounters from hospital data sources. Molina Healthcare began receiving notifications June 16, 2015. Primary Partners, the first ACO to participate in ENS, started receiving notifications on July 17, 2015 joining WellCare Health Plans, Sunshine State Health Plan, Integral Quality Care and Molina Healthcare. There were 44,955 health plan notifications through ENS in July. The development team continues to monitor feeds from data sources, load updated patient panels from participants, and continues to find efficiencies and improvements for performance.

Tampa Bay HIE went live on the Patient Look-Up (PLU) service on May 28, 2015 joining the other production nodes that include Strategic Health Intelligence, Atlantic Coast HIE, Florida Hospital/Adventist Health System, UF Health, Broward Health, Martin Health System, Bethesda Health, Senior Home Care – (an affiliate of Kindred at Home), and Orlando Health. PLU produced 566 successful transactions during the month of July. The PLU deployment team continued onboarding progress with the Department of Health (DOH), CHSPSC Florida Affiliates, Community Health IT, and Florida Accountable Care Services.

## **2. Adoption and Utilization Statistics**

### **a) PLU Deployments**

- Production Deployments
  - Strategic Health Intelligence (SHI)
    - Continued assistance with hybrid service testing
  - Atlantic Coast HIE (ACH)
    - Staged production for new vendor transition
    - Held several meetings to discuss consent strategy
  - Florida Hospital
    - Continue to work to correct issue with retrieving DeferredCreation documents
    - Continued investigation of data availability (pre-fetching) service performance
    - Upgraded security certificate
    - Resolved time drift issue affecting query for document

- UF Health
  - Worked with node on consent testing
  - Reviewed Audit Plan to audit outbound queries only
  - Answered questions about privacy management and which queries to audit
- Broward Health
  - Updated servers for CPU and memory
  - Completed HIE gateway update
  - Worked to add DeferredCreation status to requesting for documents
- Martin Health
  - No requests for support this period
- Bethesda Health
  - Investigated demographic matches
  - Resolved gateway issues with reporting metrics
- Senior Home Care
  - Upgraded certificate
- Orlando Health
  - Configured firewall to allow all Florida HIE node inbound queries
  - Tested vendor upgrade to retrieve large documents
- Tampa Bay Health Information Exchange
  - Went live on the PLU service on May 28, 2015
  - Reviewed FairWarning training with privacy managers
  - Worked towards connecting All Children’s Hospital
- Deployments near completion
  - CHSPSC Florida Affiliates (Community Health Systems Professional Services Corporation)
    - Tested certificate gateway
    - Tested production gateway with UF Health
    - Updated certificate environment gateway
    - Closed the outstanding outreach subcontract

Community Health Systems (formerly HMA) Deployment Status (Express Lite)



- Deployments in work
  - Department of Health (DOH)
    - Recommended architecture for public health querying
    - Tested outbound queries architecture within the Harris test environment

- Investigated public health use case
- Investigated gateway validation for public health use case
- Florida Accountable Care Services (ACO)
  - Contacted by node to reengage onboarding activity
  - Provided webinar information
  - Upgraded appliance
  - Continued providing gateway knowledge and architecture options
- Community Health IT (Relay Health)
  - Supported status meetings
  - Answered questions related to security
  - Approved hosting location for Express Lite
  - Updated network settings to allow connections
  - Tested inbound queries and received permissions to respond to queries
  - Installed whitelist within test environment
  - Started pre-validation for patient discovery
  - Worked patient discovery, document query and document retrieve in the test environment
  - Analyzed in-process prevalidation test results

DOH Deployment Status (Express)



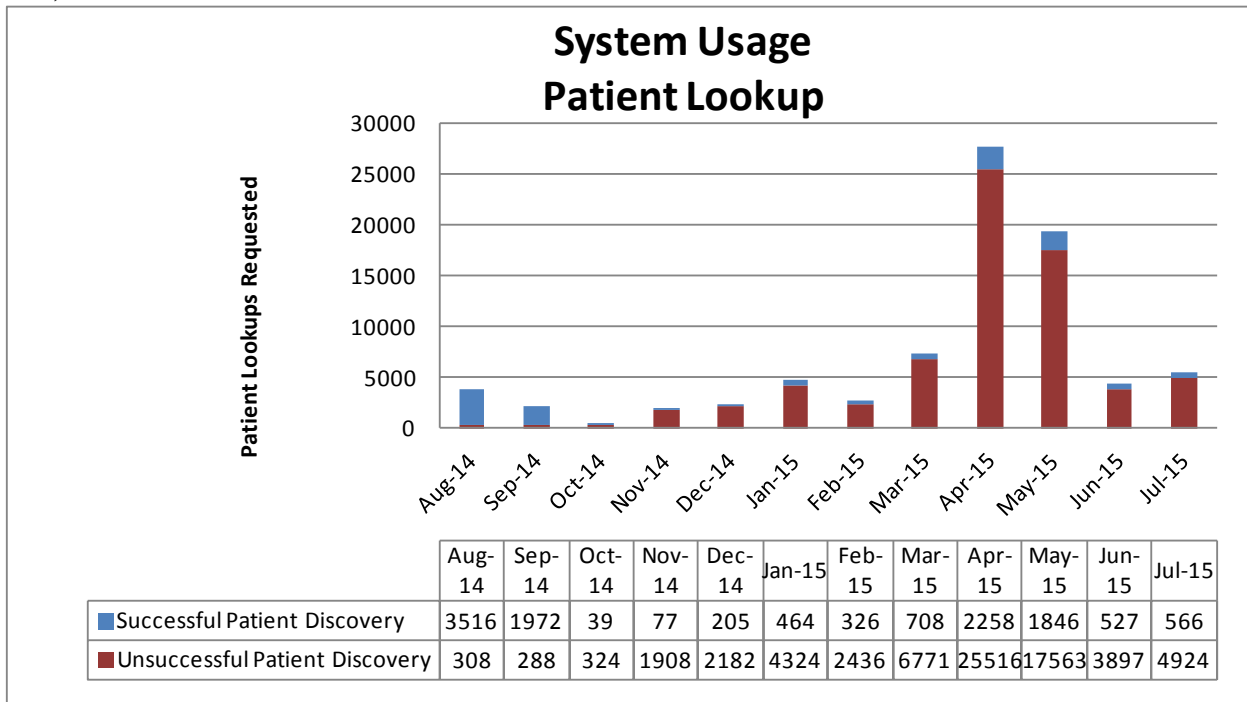
Florida Accountable Care Services Deployment Status (Express Lite)



Community Health IT (Express Lite)



**b) PLU Transactions**

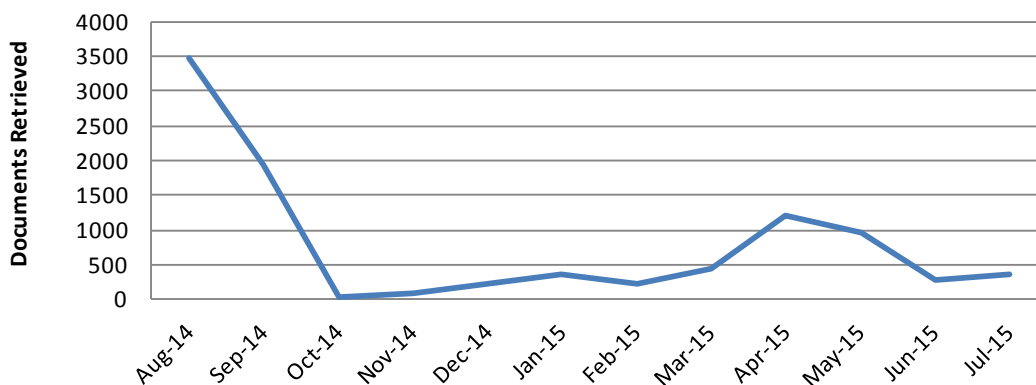


Note: Due to continued development and configuration, Florida Hospital's pre-fetching service did not initiate queries in June and July although individual clinicians continued to query.

**July 2015 Node Inbound Transactions**

Node	Successful	Unsuccessful	Total Inbound Patient Discovery
SHI	5	577	582
ACH	4	605	609
Florida Hospital	14	58	72
UF Health	57	545	602
Broward Health	0	607	607
Martin Health System	0	608	608
Bethesda Health	0	606	606
Senior Home Care	11	597	608
Orlando Health	370	236	606
Tampa Bay HIE	105	485	590
<b>Totals</b>	<b>566</b>	<b>4,924</b>	<b>5,490</b>

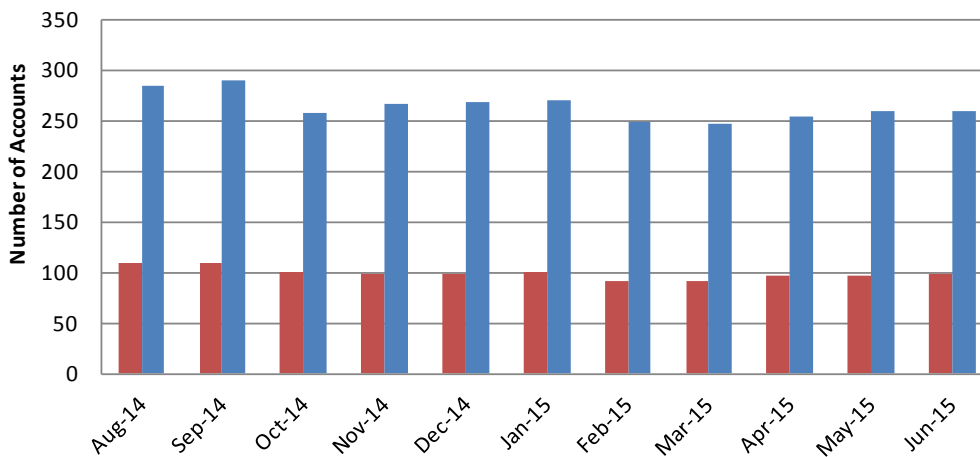
## Transactions Processed Patient Lookup



	Aug-14	Sep-14	Oct-14	Nov-14	Dec-14	Jan-15	Feb-15	Mar-15	Apr-15	May-15	Jun-15	Jul-15
Documents Retrieved	3479	1950	27	77	212	368	217	437	1222	951	290	360

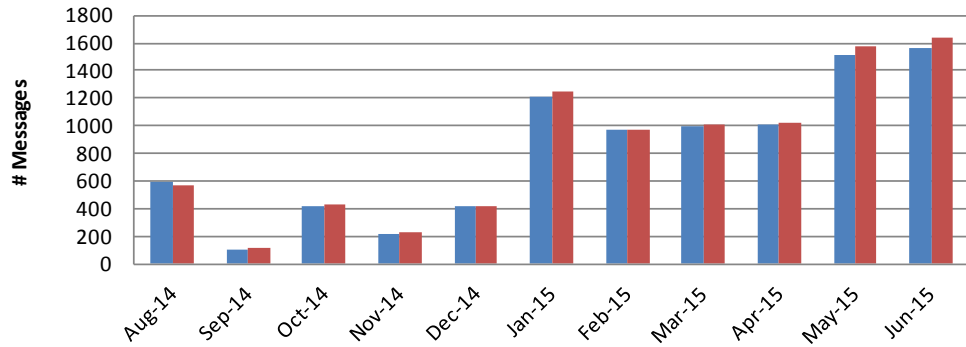
### c) Direct Messaging Registrants and Transactions

## Direct Messaging Registrants



	Aug-14	Sep-14	Oct-14	Nov-14	Dec-14	Jan-15	Feb-15	Mar-15	Apr-15	May-15	Jun-15
Direct Messaging Accounts	109	110	100	99	98	101	91	91	96	97	99
Direct Messaging Users	284	289	258	267	268	269	248	247	254	260	260

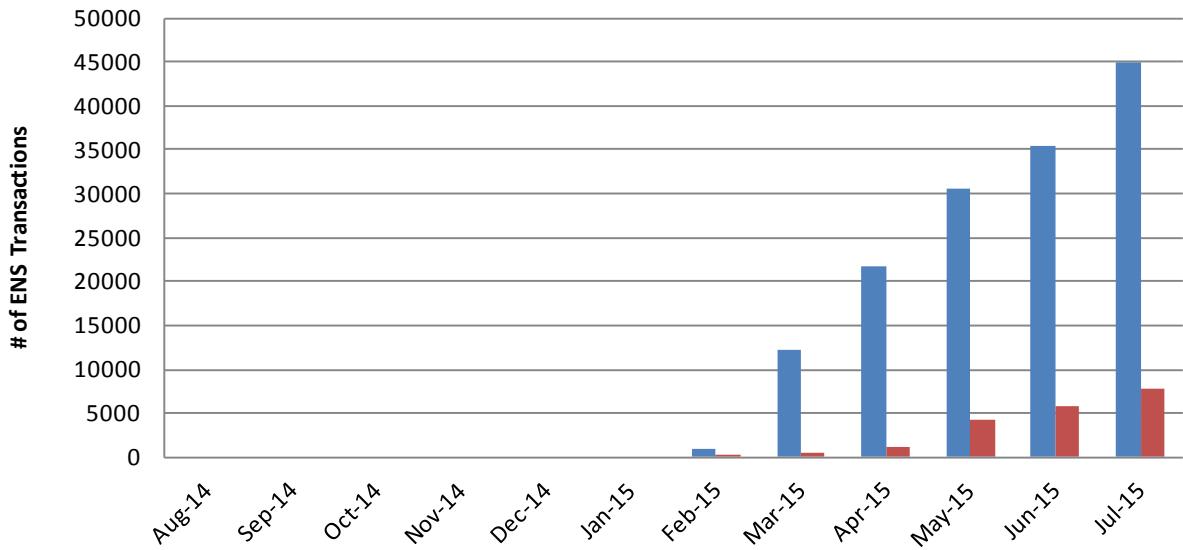
### Direct Messaging Transactions



	Aug-14	Sep-14	Oct-14	Nov-14	Dec-14	Jan-15	Feb-15	Mar-15	Apr-15	May-15	Jun-15
# Messages Received by Account	593	106	416	221	412	1213	969	994	1013	1509	1565
# Messages Originated by Account	564	118	433	225	417	1254	969	1003	1022	1580	1642

### d) ENS Transactions

#### ENS Transactions



	Aug-14	Sep-14	Oct-14	Nov-14	Dec-14	Jan-15	Feb-15	Mar-15	Apr-15	May-15	Jun-15	Jul-15
Health Plans	0	0	0	0	0	0	955	12,198	21,618	30,572	35,501	44,955
Hospitals	0	0	0	0	0	0	64	400	1,189	4,164	5,833	7,733

<i>Subscribers</i>	<i>Panel Size</i>					
	<i>Feb-15</i>	<i>Mar-15</i>	<i>Apr-15</i>	<i>May-15</i>	<i>Jun-15</i>	<i>Jul-15</i>
WELLCARE	36,926	36,926	36,926	36,926	38,832	39,506
SUNSHINE		421,426	421,426	435,218	437,329	437,329
INTEGRAL			90,400	90,400	90,400	90,400
MOLINA					352,577	342,055
PRIMARY PARTNERS						3,973
Total	36,926	458,352	548,752	562,544	919,138	913,263

- Health Plans enrolled
  - WellCare Health Plans
  - Sunshine State Health Plan
  - Molina Healthcare of Florida
  - Integral Quality Care
- Accountable Care Organizatons (ACO) enrolled
  - Primary Partners
- 205 Hospitals enrolled
  - 100% connected to ENS in production

ENS Data Source status as of July 31, 2015

<b>Data Sources *</b>	<b># of Hospitals</b>	<b>Status</b>
Adventist Health System	15	Production
All Children's Health System	1	Production
Ann Bates Leach Eye Hospital	1	Production
Baker County Ed Fraser	1	Production
Baptist Health Care	4	Production
Baptist Health South Florida	3	Production
Baptist Health System	4	Production
Bartow Regional Medical Center (CHS)	1	Production
Bayfront Health Brooksville Springhill (CHS)	2	Production
Bayfront Health St. Petersburg (CHS)	1	Production
Bay Care Health System	12	Production
Bay Medical Center	1	Production
Bert Fish Medical Center	1	Production
Bethesda Health	2	Production
Boca Raton Regional Hospital	1	Production
Broward Health	4	Production
Calhoun Liberty Hospital	1	Production
Central Florida Health Alliance	3	Production
Charlotte Regional Medical Center (CHS)	1	Production
Citrus Memorial Health System	1	Production



<b>Data Sources *</b>	<b># of Hospitals</b>	<b>Status</b>
Desoto Memorial Hospital	1	Production
Doctors Bonifay	1	Production
Doctors Memorial Hospital (Perry)	1	Production
Flagler Hospital	1	Production
Florida Hospital	7	Production
Halifax Hospital Medical Center	1	Production
HCA	45	Production
Healthcare District of Palm Beach County	1	Production
Health Central Hospital	1	Production
Health First	4	Production
Healthmark Regional Medical Center	1	Production
Hendry Regional Medical Center	1	Production
Heart of Florida (CHS)	1	Production
Highlands Regional Medical Center (CHS)	1	Production
H. Lee Moffitt Cancer Center	1	Production
Indian River Memorial Hospital	1	Production
Jackson County Hospital District	1	Production
Jackson Health System	3	Production
Jupiter Medical Center	1	Production
Lake Butler Hospital	1	Production
Lakeland Regional Medical Center	1	Production
Lake Wales Medical Center (CHS)	1	Production
Larkin Community Hospital	1	Production
Lee Memorial Health System	4	Production
Lehigh Regional Medical Center (CHS)	1	Production
Lower Keys Medical Center (CHS)	2	Production
Madison County Hospital	1	Production
Manatee Healthcare System	2	Production
Martin Health	3	Production
Memorial Healthcare System	5	Production
Miami Children's Hospital	1	Production
Mt. Sinai Medical Center	1	Production
Munroe Regional Medical Center	1	Production
Naples Community Hospital	2	Production
Northwest Florida Community Hospital	1	Production
Orlando Health System	5	Production
Parrish Medical Center	1	Production
Pasco Regional Medical Center (CHS)	1	Production
Peace River Regional Medical Center (CHS)	1	Production
Physicians Regional Medical Center (CHS)	2	Production
Regional General Hospital Williston	1	Production
Sacred Heart Health System	3	Production



**c) ENS Deployments – Health Plans/ACOs**

<u>Organizations</u>	<u>Initial Member #</u>	<u>Target Start Date</u>
AvMed	300,000	Sept 2015