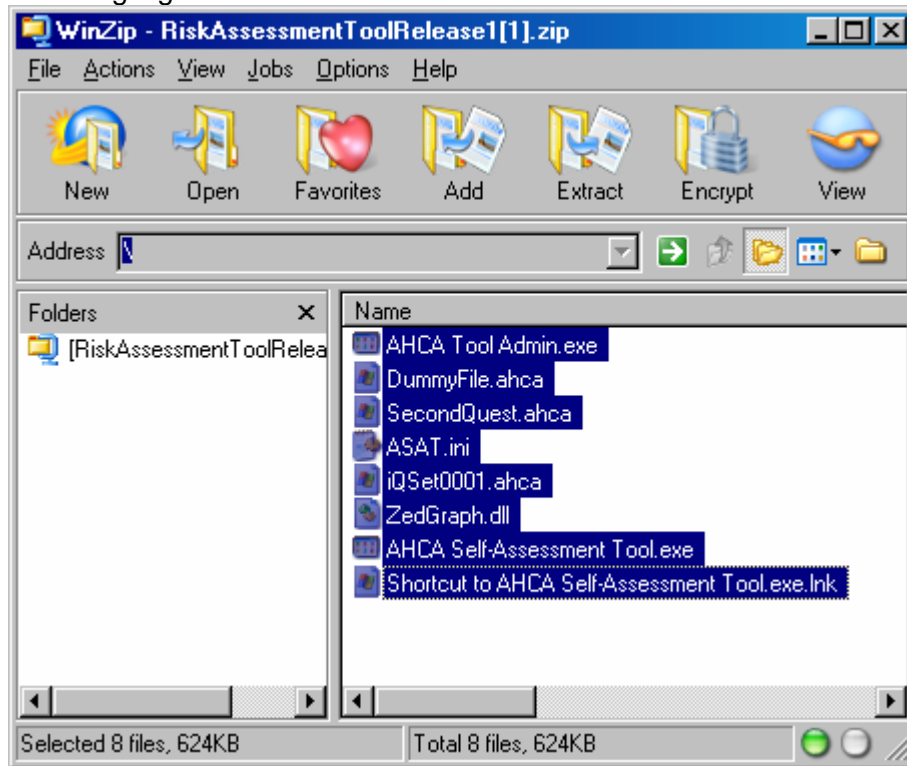
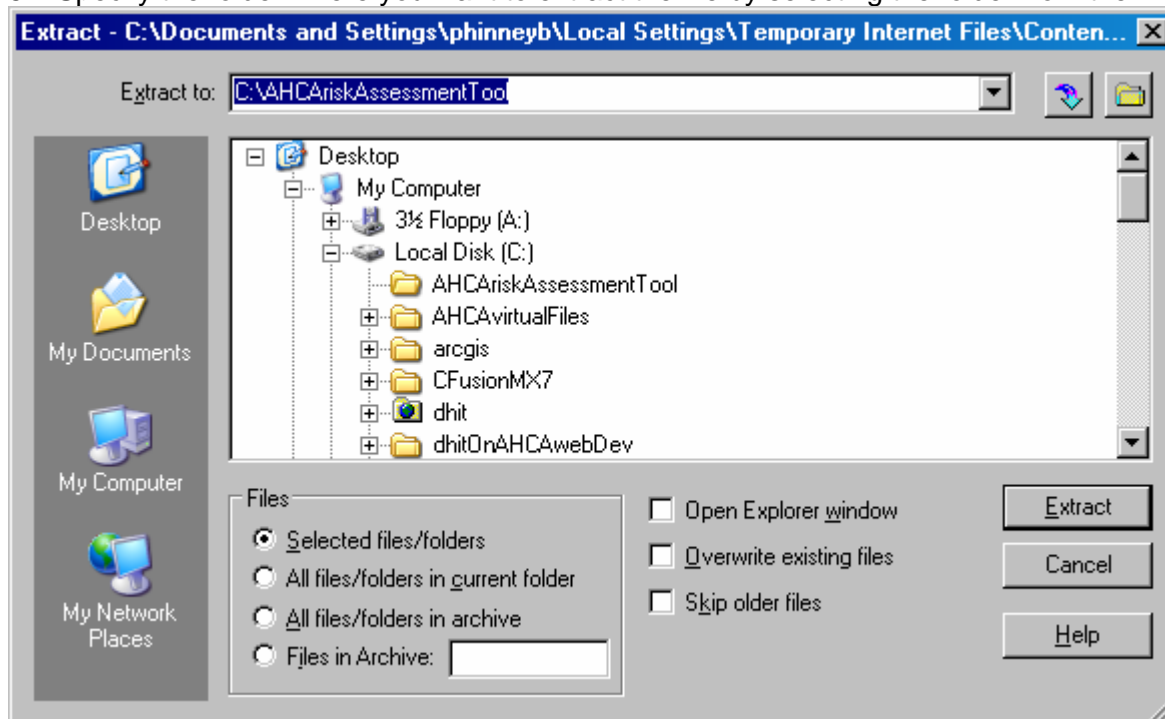


AHCA Self-Assessment Tool File Extraction Instructions for Windows Operating System (One Option)

1. Click on the AHCA Risk Assessment Tool.exe file located on <http://www.fhin.net/PSresourceCtr/PSassessTools.shtml>
2. Click Open
3. Click the first file (not folder) then hold down the "Shift" key on your keyboard and click the last file to highlight all files



4. Click the "Extract" menu icon at the top as visible above
5. Specify the folder where you want to extract the file by selecting the folder from the Extract to: field



6. Click the extract button.
7. Now open the folder you specified above and click on the "AHCA Self-Assessment Tool.exe" file to begin using the tool.